

SUFFOLK COUNTY NY
Department of Health Services

2002 Annual Report

Vital Statistics for 2001

Steve Levy

County Executive

Brian L. Harper M.D., M.P.H

Commissioner

Note on Changes in the Vital Statistics Data

Starting with the 1999 vital statistics data, two important changes were made in the way statistical data are classified and analyzed. These changes are very important to keep in mind when comparing rates calculated from 1999 or later years with rates from pre-1999 data.

The first change is that, starting with 1999, deaths are classified using a new system *International Classification of Disease 10* (ICD 10) instead of the older ICD 9 system. For certain causes of death, like influenza and pneumonia, rates have been substantially reduced because deaths have been reclassified to other causes under ICD 10. For other causes of death, like cancer, total death rates have been little impacted but the internal distribution of deaths between different types of cancer have changed¹. A dashed vertical line has been used in the mortality trend graphs in the *SCDHS Annual Report* to caution in making trend comparisons between rates compiled in the two ways. (Rigorous statistical comparisons between ICD 9 and ICD 10 compiled rates requires the use of a formula with a comparability ratio for that cause of death. Some of these ratios have been published by the National Center for Health Statistics, see footnote one below.)

A second major change was also made beginning with the 1999 data. The age adjustment standard for mortality data was changed from the 1940 US population to the 2000 US population. Age standards are used so that rates can be compared between populations that have different age distributions. Older populations generally have more disease, so one wants to control for differences in age when making population comparisons.

Different data sets, mortality, cancer incidence, national health surveys, etc., had been using different standard populations (1940 US population, 1970 US population, etc.). Therefore it was decided in 1998 by the US Department of Health and Human Services to adopt a single age adjustment standard across all health data sets². This change in the age adjustment standard only affects a single *SCDHS Annual Report* table: 'Crude and Age-Adjusted Death Rates From Leading Causes by Township of Residence'. In this table the age-adjusted rates, given in parentheses, use the new standard. Caution should be exerted in comparing these age-adjusted rates with the corresponding age-adjusted rates in previous year editions of the *SCDHS Annual Report*. Rate differences could be due, entirely or in part, to differences in the age-adjustment standard or in changes in the disease classification system.

¹For a detailed discussion of the impact of this change see Anderson RN, Minino AM, Hoyert DL, and Rosenberg HM; 'Comparability of Cause of Death Between ICD-9 and ICD-10: Preliminary Estimates'; National Vital Statistics Reports; Vol. 49, No. 2, May 18, 2001

²Klein, RJ, Schoenborn CA; 'Age Adjustment Using the 2000 Projected US Population'; Healthy People 2010 Statistical Notes; No. 20, Jan. 2001

Note on Small Cell Frequencies

Because many diseases are rare, low frequencies may occur in some of the cells of the following statistical tables. Cell frequencies under twenty five should be treated cautiously. Random chance has a greater impact on cell counts, on a year to year basis, when the cell frequencies are small. Random chance can raise or lower counts in an artificial manner that has little to do with the underlying disease trend. Rates created from such frequencies will also jump up and down reflecting these random changes.

In approaching a small cell frequency, and its corresponding rate, it is best to look at several years of data to see if there are substantial changes on a year to year basis. If the rate is consistent across years, we have greater confidence that the observed rate reflects the underlying rate exclusive of random chance.

In order to facilitate inspection of year to year changes in a cell frequency, several years of the *SCDHS Annual Report* statistical tables are posted on this web page.

**VITAL STATISTICS RATES BY TOWNSHIP OF RESIDENCE:
2001 COMPARISON OF SUFFOLK COUNTY WITH OTHER AREAS**

Numbers	2001			
	Total N.Y.S.	New York City	Nassau County	Suffolk County
Live Births	253,524	119,412	16,260	19,966
Premature Births (1)	19,492	10,071	1,243	1,422
Out-of-Wedlock Births (2)	90,577	54,734	3,027	3,973
Total Pregnancies (3)	395,413	218,097	21,851	25,808
Teenage Pregnancies (4)	42,942	25,061	1,391	1,918
Births to Teenage Mothers	19,978	10,177	567	912
Total Deaths	157,884	60,075	11,482	11,346
Infant Deaths (<1 Year)	1,450	663	84	91
Neonatal Deaths (<28 days)	1,003	466	55	59
Induced Abortions	122,271	86,466	4,227	4,817
Spontaneous Fetal Deaths	19,618	12,219	1,364	1,025
Marriages	151,241	72,587	10,096	9,530
Dissolutions of Marriage	66,828	314,494	4,021	4,257

(1) Birth weights less than 2,500 grams

(2) Out-of-Wedlock Births include births where father's age was not stated on birth certificate plus births where paternity affidavit was filed.

(3) Pregnancies include Live Births, Induced Abortions and Spontaneous Fetal Deaths

(4) Females 19 years of age or younger

(5) Rate of 1,000 population

(6) Percentage of Total Live Births

(7) Percentage of Total Pregnancies

(8) Rate per 1,000 Live Births

(9) Rates per 1,000 Live Births plus induced Abortions or Spontaneous Fetal Deaths

VITAL STATISTICS RATES BY TOWNSHIP OF RESIDENCE: 2001 COMPARISON OF SUFFOLK COUNTY WITH OTHER AREAS

Rates	NYS	NYC	Nassau	Suffolk
Live Births (5)	13.3	14.8	12.1	13.9
Premature Births (6)	7.7	8.4	7.6	7.1
Out-of-Wedlock Births (6)	35.9	45.9	18.6	19.9
Teenage Pregnancies (7)	10.9	11.5	6.4	7.4
Births to Teenage Mothers (6)	7.9	8.5	3.5	4.6
Total Deaths (5)	8.3	7.4	8.6	7.9
Infant Deaths (<1 Year) (8)	5.7	5.6	5.2	4.5
Neonatal Deaths (<28 days) (8)	4.0	3.9	3.4	2.9
Induced Abortions (9)	325.4	420.0	20.6	194.4
Spontaneous Fetal Deaths (9)	71.8	92.8	7.7	48.8
Marriages (5)	7.9	9.0	7.5	6.6
Dissolutions of Marriage (5)	3.5	3.9	3.0	2.9

(1) Birth weights less than 2,500 grams

(2) Out-of-Wedlock Births include births where father's age was not stated on birth certificate plus births where paternity affidavit was filed.

(3) Pregnancies include Live Births, Induced Abortions and Spontaneous Fetal Deaths

(4) Females 19 years of age or younger

(5) Rate of 1,000 population

(6) Percentage of Total Live Births

(7) Percentage of Total Pregnancies

(8) Rate per 1,000 Live Births

(9) Rates per 1,000 Live Births plus induced Abortions or Spontaneous Fetal Deaths

**VITAL STATISTICS RATES* BY TOWNSHIP OF RESIDENCE:
SUFFOLK COUNTY, 2001**

	Babylon	Brkhaven	East Hampton	Huntington	Islip	Riverhead	Shelter Island	Smithtown	Sthmptn	Southold	TOTAL (1) SUFFOLK
Live Births (2)	138	137	11.6	13.6	15.2	95	10.6	133	14.9	9.7	139
Premature Births (3)	7.9	7.1	5.6	6.1	7.6	4.5	8.3	6.7	7.8	3.4	7.1
Teenage Pregnancies (4)	8.7	7.4	7.7	3.5	9.0	10.7	0.0	3.8	8.6	6.4	7.4
Births to Teenage Mothers (5)	5.8	4.3	5.2	2.2	6.4	7.1	0.0	1.0	6.0	3.9	4.6
Total Deaths (2)	8.4	7.7	8.9	7.7	6.5	11.0	18.0	8.8	9.8	13.9	7.9
Infant Deaths (<1 Year) (6)	6.1	5.4	0.0	1.9	4.6	0.0	0.0	1.9	9.6	0.0	4.5
Neonatal Deaths (<28 Days) (6)	4.1	3.0	0.0	1.1	3.4	0.0	0.0	1.3	7.2	0.0	2.9
Induced Abortions (7)	189.9	215.8	193.8	107.3	180.2	278.8	200.0	180.2	163.5	219.2	194.4
Spontaneous Fetal Deaths (7)	42.7	71.2	33.2	40.8	27.9	39.3	76.9	37.3	42.5	24.0	48.8

*Cell size frequencies lower than twenty, and rates created from such frequencies, are prone to statistical instability. See **Cautionary Note** at front of tables section.

(1) Includes event with residence unknown

(2) Rates per 1,000 population

(3) Percent of all live births weighing less than 2,500 grams

(4) Percent of all pregnancies to mothers of age 19 or younger

(5) Percent of all live births to mothers of age 19 or younger

(6) Rates per 1,000 live births

(7) Rates per 1,000 live births plus induced abortions or spontaneous fetal deaths

**VITAL STATISTICS FREQUENCIES* BY TOWNSHIP OF RESIDENCE:
SUFFOLK COUNTY, 2001**

	Babylon	Brkhaven	East Hampton	Huntington	Islip	Riverhead	Shelter Island	Smithtown	Sthmptn	Southold	TOTAL (1) SUFFOLK
Population (2)	212,463	455,580	20,100	196,462	325,673	28,422	2,273	116,629	55,880	20,925	1,434,408
Live Births	2,934	6,249	233	2,678	4,949	269	24	1,547	834	203	19,966
Premature Births (3)	231	445	13	164	374	12	2	103	65	7	1,422
Total Pregnancies (4)	3,753	8,448	297	3,114	6,179	384	32	1,947	1,034	265	25,808
Teenage Pregnancies (5)	327	623	23	109	558	41	0	74	89	17	1,918
Births to Teenage Mothers	169	268	12	58	315	19	0	10	50	8	912
Total Deaths	1,787	3,491	179	1,512	2,113	314	41	1,030	550	291	11,346
Infant Deaths (<1 Year)	18	34	0	5	23	0	0	3	8	0	91
Neonatal Deaths (<28 Days)	12	19	0	3	17	0	0	2	6	0	59
Induced Abortions	688	1,720	56	322	1,088	104	6	340	163	57	4,817
Spontaneous Fetal Deaths	131	479	8	114	142	11	2	60	37	5	1,025

*Cell size frequencies lower than twenty, and rates created from such frequencies, are prone to statistical instability. See **Cautionary Note** at front of tables section.

(1) County Totals may be higher than the sum of townships because of events reported with unknown residence

(2) LIPA Population Estimates

(3) All live births with birth weight less than 2,500 grams

(4) Sum of all live births, induced abortions, and spontaneous fetal deaths

(5) All pregnancies to mothers of age 19 or younger

**NUMBER OF SELECTED NOTIFIABLE DISEASES BY TOWNSHIP OF RESIDENCE:
SUFFOLK COUNTY, 2001 AND PROVISIONAL 2002**

Disease	2001										Suffolk County Totals	
	Babylon	Brkhaven	East Hampton	Huntington	Islip	Riverhead	Shelter Island	Smithtown	Sthmptn	Southold	2001	2002 Prov.
Amebiasis	2	3	0	1	4	0	0	1	0	0	11	25
Babesiosis	0	7	19	1	2	10	3	0	20	7	69	66
Campylobacteriosis	14	45	5	19	31	3	0	11	7	2	140	186
E.Coli 0157:H7	0	5	1	1	3	2	0	0	3	0	15	22
Ehrlichiosis	0	0	1	0	0	0	0	0	2	0	3	6
Encephalitis	1	4	0	0	3	0	0	2	1	0	13	32
Giardiasis	14	29	2	17	33	5	0	10	4	2	120	152
Gonorrhea	169	129	1	17	113	36	1	8	21	1	496	501
Hemophilus Influenza	2	1	0	2	3	0	0	0	0	0	9	11
Hepatitis A	10	26	3	10	14	0	0	6	2	0	74	46
Hepatitis B	1	5	0	0	5	1	0	0	0	1	13	11
Hepatitis C	0	0	0	0	1	0	0	0	0	0	1	5
Legionellosis	1	5	0	2	3	1	0	0	1	1	14	12
Lyme Disease	9	83	58	13	23	47	12	5	84	36	417	513
Malaria	0	5	1	1	3	0	0	0	0	6	11	3
Measles	0	0	0	0	0	0	0	0	0	0	0	0
Meningitis	21	21	3	24	15	4	0	8	3	1	100	88
Mumps	0	0	0	0	0	0	0	0	0	0	0	3
Pertussis	1	1	0	0	0	0	0	0	0	0	3	8
R.M. Spotted Fever	0	0	0	0	0	0	0	0	0	0	0	0
Rubella	0	0	0	0	0	0	0	0	0	0	0	0
Salmonellosis	27	86	5	29	50	10	1	14	12	2	236	210
Shigellosis	11	11	0	7	26	0	0	4	4	0	63	40
Syphilis	6	3	0	0	6	0	0	4	1	0	20	66
Tuberculosis	13	15	1	12	18	3	0	3	2	1	68	57

**RATES(1) OF SELECTED NOTIFIABLE DISEASES BY TOWNSHIP OF RESIDENCE:
SUFFOLK COUNTY, 2001 AND PROVISIONAL 2002**

Disease	2001										Suffolk County Totals (1)	
	Babylon	Brkhaven	East Hampton	Huntington	Islip	Riverhead	Shelter Island	Smithtown	Sthmptn	Southold	2001	2002 Prov.
Amebiasis	0.9	0.7	0.0	0.5	1.2	0.0	0.0	0.9	0.0	0.0	0.8	1.7
Babesiosis	0.0	1.5	94.5	0.5	0.6	35.2	132.0	0.0	35.8	33.4	4.8	4.6
Campylobacteriosis	6.6	9.9	24.9	9.7	9.5	10.5	0.0	9.4	12.5	9.6	9.8	12.8
E.Coli 0157:H7	0.0	1.1	5.0	0.5	0.9	7.0	0.0	0.0	5.4	0.0	1.0	1.5
Ehrlichiosis	0.0	0.0	5.0	0.0	0.0	0.0	0.0	0.0	3.6	0.0	0.2	0.4
Encephalitis	0.5	0.9	0.0	0.0	0.9	0.0	0.0	1.7	1.8	0.0	0.9	2.2
Giardiasis	6.6	6.4	10.0	8.6	10.1	17.6	0.0	8.6	7.2	9.6	8.4	10.5
Gonorrhea	79.5	28.3	5.0	8.6	34.7	126.7	44.0	6.8	37.6	4.8	34.6	34.6
Hemophilus Influenza	0.9	0.2	0.0	1.0	0.9	0.0	0.0	0.0	0.0	0.0	0.6	0.8
Hepatitis A	4.7	5.7	14.9	5.1	4.3	0.0	0.0	5.1	3.6	0.0	5.2	3.2
Hepatitis B	0.5	1.1	0.0	0.0	1.5	3.5	0.0	0.0	0.0	4.8	0.9	0.8
Hepatitis C	0.0	0.0	0.0	0.0	0.3	0.0	0.0	0.0	0.0	0.0	0.1	0.3
Legionellosis	0.5	1.1	0.0	1.0	0.9	3.5	0.0	0.0	1.8	4.8	1.0	0.8
Lyme Disease	4.2	18.2	288.5	6.6	7.1	165.4	527.9	4.3	150.3	172.0	29.1	35.3
Malaria	0.0	1.1	5.0	0.5	0.9	0.0	0.0	0.0	0.0	28.7	0.8	0.2
Measles	0.0	0.0	0.0	0.0	0.0	0.0	0.0	0.0	0.0	0.0	0.0	0.0
Meningitis	9.9	4.6	14.9	12.2	4.6	14.1	0.0	6.9	5.4	4.8	7.0	6.1
Mumps	0.0	0.0	0.0	0.0	0.0	0.0	0.0	0.0	0.0	0.0	0.0	0.2
Pertussis	0.5	0.2	0.0	0.0	0.0	0.0	0.0	0.0	0.0	0.0	0.2	0.5
R.M. Spotted Fever	0.0	0.0	0.0	0.0	0.0	0.0	0.0	0.0	0.0	0.0	0.0	0.0
Rubella	0.0	0.0	0.0	0.0	0.0	0.0	0.0	0.0	0.0	0.0	0.0	0.0
Salmonellosis	12.7	18.9	24.9	14.8	15.3	35.2	44.0	12.0	21.5	9.6	16.5	14.5
Shigellosis	5.2	2.4	0.0	3.6	8.0	0.0	0.0	3.4	7.2	0.0	4.4	2.8
Syphilis	2.8	0.6	0.0	0.0	1.8	0.0	0.0	3.4	1.8	0.0	1.4	4.6
Tuberculosis	6.1	3.3	5.0	6.1	5.5	10.5	0.0	2.6	3.6	4.8	4.7	3.9

(1) Cases per 100,000 population

**NUMBER* OF DEATHS FROM LEADING CAUSES BY TOWNSHIP OF RESIDENCE:
SUFFOLK COUNTY, 2001**

CAUSE OF DEATH WITH I.C.D. X CODE	Babylon	Brkhaven	East Hampton	Huntington	Islip	Riverhead	Shelter Island	Smithtown	Sthmptn	Southold	TOTAL (1) SUFFOLK
Heart Disease (I00-09, I11, I13, I20-I51)	652	1,216	56	484	745	109	11	391	173	106	3,954
Malignant Neoplasms (140-208)	466	828	51	377	530	79	16	225	160	62	2,803
Cerebrovascular Disease (430-438)	75	164	13	86	72	15	3	58	33	21	540
Motor Vehicle Accidents (810-825)	19	57	2	15	34	11	0	19	12	5	175
All other accidents (800-809,826-949)	29	97	2	33	48	2	0	8	15	8	244
Cirrhosis of Liver (571)	17	25	4	9	28	2	0	5	4	2	96
Chronic Obstructive Pulmonary Disease	89	173	12	58	120	13	1	42	20	11	539
Diabetes Mellitus (250)	40	74	5	36	56	6	1	26	11	6	262
Pneumonia and Influenza (480-487)	42	88	3	45	40	5	0	28	11	7	270
Atherosclerosis (440)	8	19	0	19	11	0	0	7	1	1	66
Suicide (950-959)	12	27	1	13	12	3	0	6	5	4	83
Homicide (960-978)	8	9	0	2	11	5	0	1	1	0	38
All Other Causes	330	714	30	335	406	64	9	214	104	58	2,276

*Cell size frequencies lower than twenty, and rates created from such frequencies, are prone to statistical instability. See **Cautionary Note** at front of tables section.

(1) County totals may be higher than the sum of townships because of events with Township of Residence unknown.

(2) Motor Vehicle Accidents and All Other Accidents use miscellaneous non-consecutive V codes in ICD X. A list of codes for each of these causes is available on request.

**CRUDE AND AGE ADJUSTED *DEATH RATES **FROM LEADING CAUSES BY TOWNSHIP OF RESIDENCE:
SUFFOLK COUNTY, 2001**

I.C.D. X CODE	CAUSE OF DEATH	Babylon	Brkhaven	East Hampton	Huntington	Islip	Riverhead	Shelter Island	Smithtown	Sthmptn	Southold	TOTAL SUFFOLK
(I00-09, I11, I13, I20-I21)	Heart Disease	306.9	266.9	278.4	246.4	228.8	383.5	483.9	335.2	309.7	506.6	274.9
		(331.7)	(322.7)	(220.7)	(247.1)	(308.7)	(270.3)	(198.0)	(302.3)	(230.1)	(265.9)	(297.5)
(C00-C97)	Malignant Neoplasms	219.3	181.7	253.6	191.9	162.7	278.0	703.9	192.9	286.4	296.3	194.8
		(227.5)	(210.5)	(201.1)	(184.7)	(196.4)	(200.5)	(328.9)	(180.6)	(220.8)	(178.0)	(203.4)
(I60-I69)	Cerebrovascular Disease	35.3	36.0	66.3	43.8	22.1	52.8	132.0	49.7	58.5	100.4	37.6
		(38.8)	(43.7)	(55.6)	(44.1)	(29.3)	(37.2)	(51.3)	(45.7)	(43.3)	(51.9)	(40.9)
(See Note***)	Motor Vehicle Accidents	8.9	12.5	10.0	7.6	10.4	38.7	.0	16.3	21.5	23.9	12.1
		(9.3)	(13.1)	(8.8)	(8.6)	(11.2)	(39.2)	(.0)	(17.5)	(21.6)	(25.9)	(12.7)
(See Note***)	All other accidents	13.6	21.3	10.0	16.8	14.7	7.0	.0	6.9	26.8	38.2	16.9
		(14.3)	(23.1)	(7.5)	(16.8)	(17.0)	(6.0)	(.0)	(6.5)	(23.5)	(19.0)	(17.5)
(K70, K73, K74)	Cirrhosis of Liver	8.0	5.5	19.9	4.6	8.6	7.0	.0	4.3	7.2	9.6	6.7
		(8.1)	(5.9)	(15.7)	(4.3)	(9.4)	(4.8)	(.0)	(3.7)	(5.9)	(5.0)	(6.7)
(J40-J47)	Chronic Obstructive Pulmonary	41.9	38.0	59.7	29.5	36.8	45.7	44.0	36.0	35.8	52.6	37.6
		(44.0)	(45.8)	(47.0)	(30.2)	(48.9)	(30.2)	(17.9)	(33.9)	(26.8)	(27.1)	(40.6)
(E10-E14)	Diabetes Mellitus	18.8	16.2	24.9	18.3	17.2	21.1	44.0	22.3	19.7	28.7	18.2
		(19.7)	(19.2)	(19.8)	(17.6)	(21.1)	(14.0)	(16.7)	(20.3)	(14.9)	(18.0)	(19.1)
(J10-J18)	Pneumonia and Influenza	19.8	19.3	14.9	22.9	12.3	17.6	.0	24.0	19.7	33.5	18.8
		(21.7)	(23.1)	(12.4)	(23.4)	(17.4)	(12.6)	(.0)	(21.7)	(15.4)	(18.1)	(20.4)
(I70)	Atherosclerosis	3.8	4.2	.0	9.7	3.4	.0	.0	6.0	1.8	4.8	4.6
		(4.0)	(5.2)	(.0)	(10.0)	(4.5)	(.0)	(.0)	(5.2)	(1.3)	(2.2)	(5.0)
(X60-X84.9, Y87.0)	Suicide	5.6	5.9	5.0	6.6	3.7	10.6	.0	5.1	8.9	19.1	5.8
		(5.8)	(5.9)	(3.9)	(6.6)	(4.0)	(13.8)	(.0)	(4.8)	(7.9)	(22.4)	(5.8)
(X85-Y09.9, Y87.1, Y35, Y89.0)	Homicide	3.8	2.0	.0	1.0	3.4	17.6	.0	.9	1.8	.0	2.6
		(3.9)	(2.0)	(.0)	(1.2)	(3.4)	(21.8)	(.0)	(1.0)	(1.4)	(.0)	(2.7)
	All Other Causes	155.3	156.7	149.2	170.5	124.7	225.2	396.0	183.5	186.1	277.2	157.8
		(162.5)	(181.3)	(121.9)	(169.4)	(152.4)	(170.0)	(153.8)	(164.6)	(150.5)	(156.5)	(166.4)

*Adjusted to 2000 U.S. Population. Age Adjusted rates are given in parentheses.

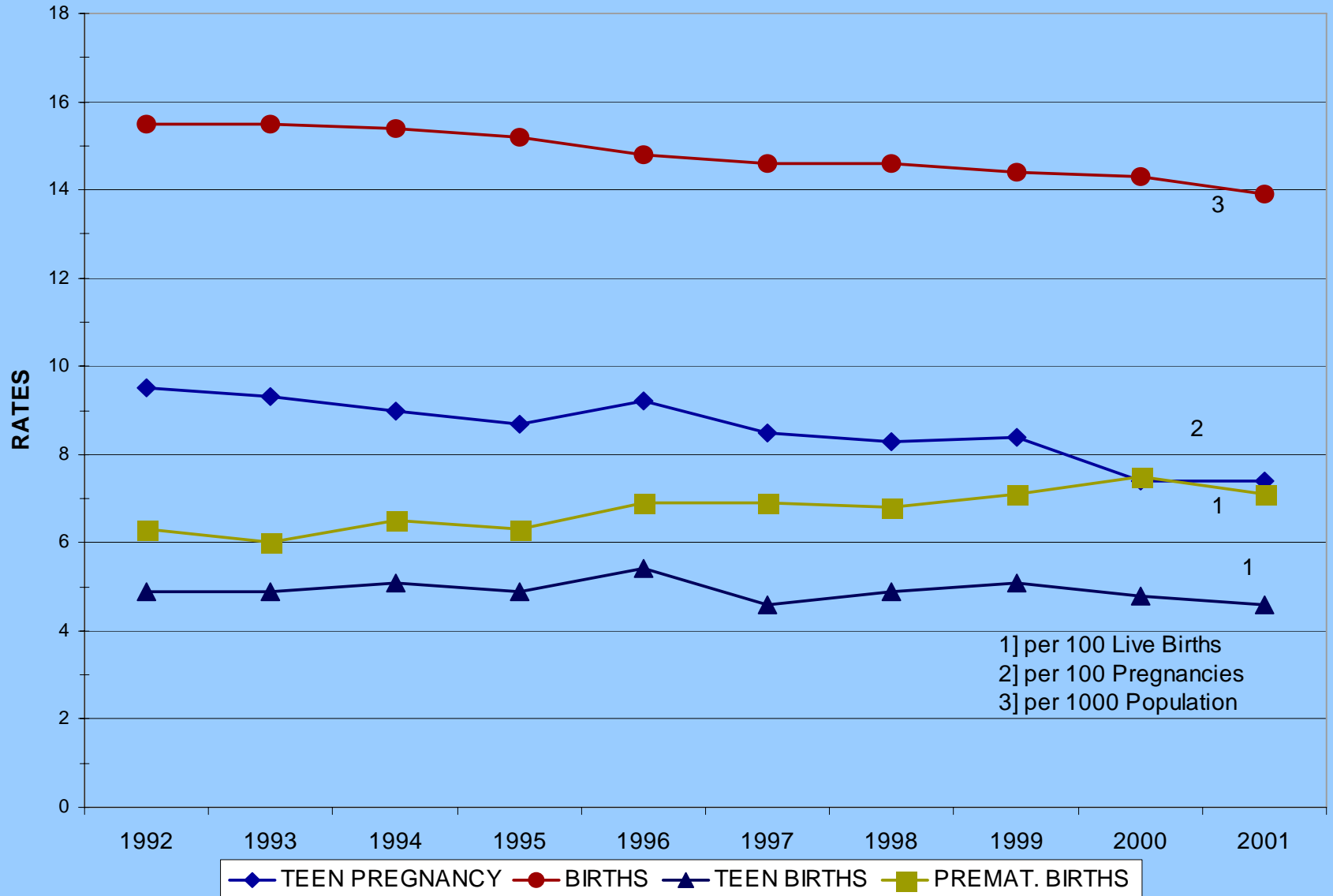
Cell size frequencies lower than twenty, and rates created from such frequencies, are prone to statistical instability. See **Cautionary Note at front of tables section.

Rates per 100,000 population.

*** Motor Vehicle Accidents and All Other Accidents use miscellaneous non-consecutive V codes in ICDX. A list of codes for each of these causes is available on request.

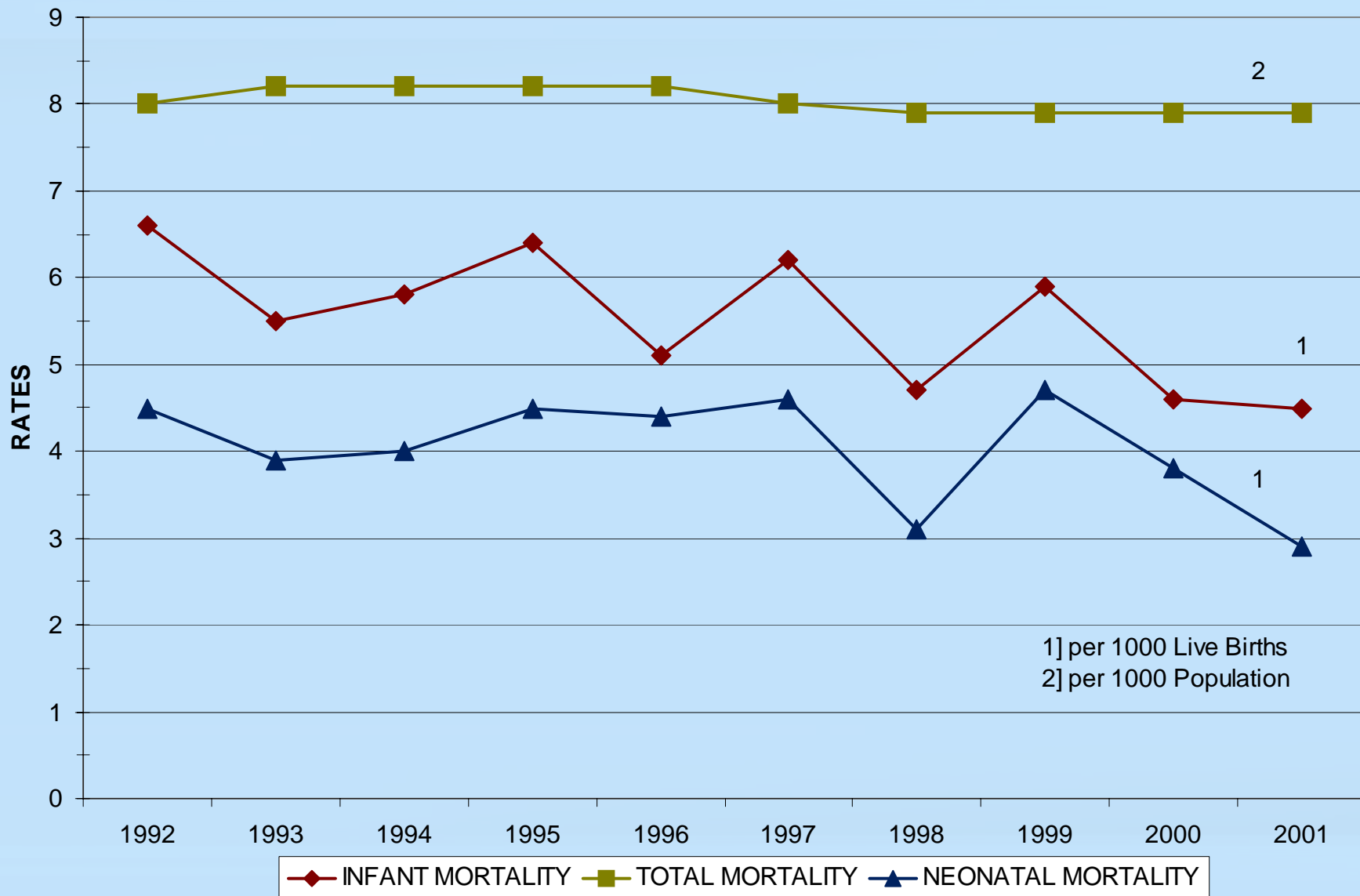
NATALITY RATES: SUFFOLK COUNTY

1992-2001: A TEN YEAR REVIEW



MORTALITY RATES: SUFFOLK NY

1992-2001: A TEN YEAR REVIEW



**INFANT DEATHS BY RACE
FREQUENCIES AND RATES*
SUFFOLK COUNTY 1992-2001**

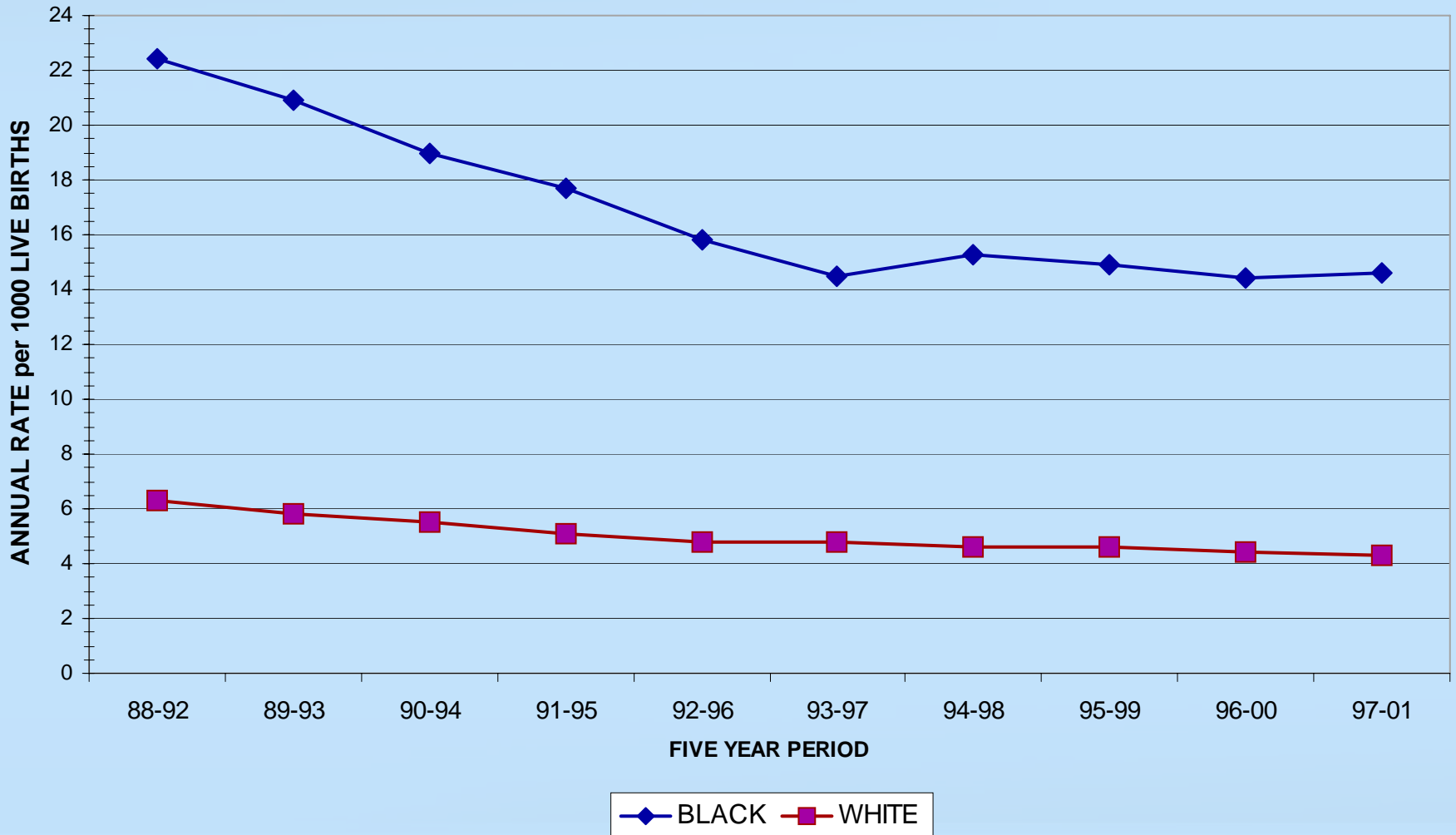
YEAR OF DEATH										
RACE	1992	1993	1994	1995	1996	1997	1998	1999	2000	2001
WHITE	92	88	89	84	75	93	66	91	64	65
	(5.1)	(4.9)	(4.9)	(4.7)	(4.3)	(5.3)	(3.8)	(5.2)	(3.6)	(3.7)
BLACK	37	22	27	32	21	23	28	23	29	24
	(20.1)	(12.1)	(15.3)	(19.1)	(12.5)	(13.7)	(15.7)	(13.6)	(16.3)	(13.9)

* Rates per 1,000 Live Births are given in parentheses

Cell size frequencies lower than twenty, and rates created from such frequencies, are prone to statistical instability. See **Cautionary Note at front of tables section.

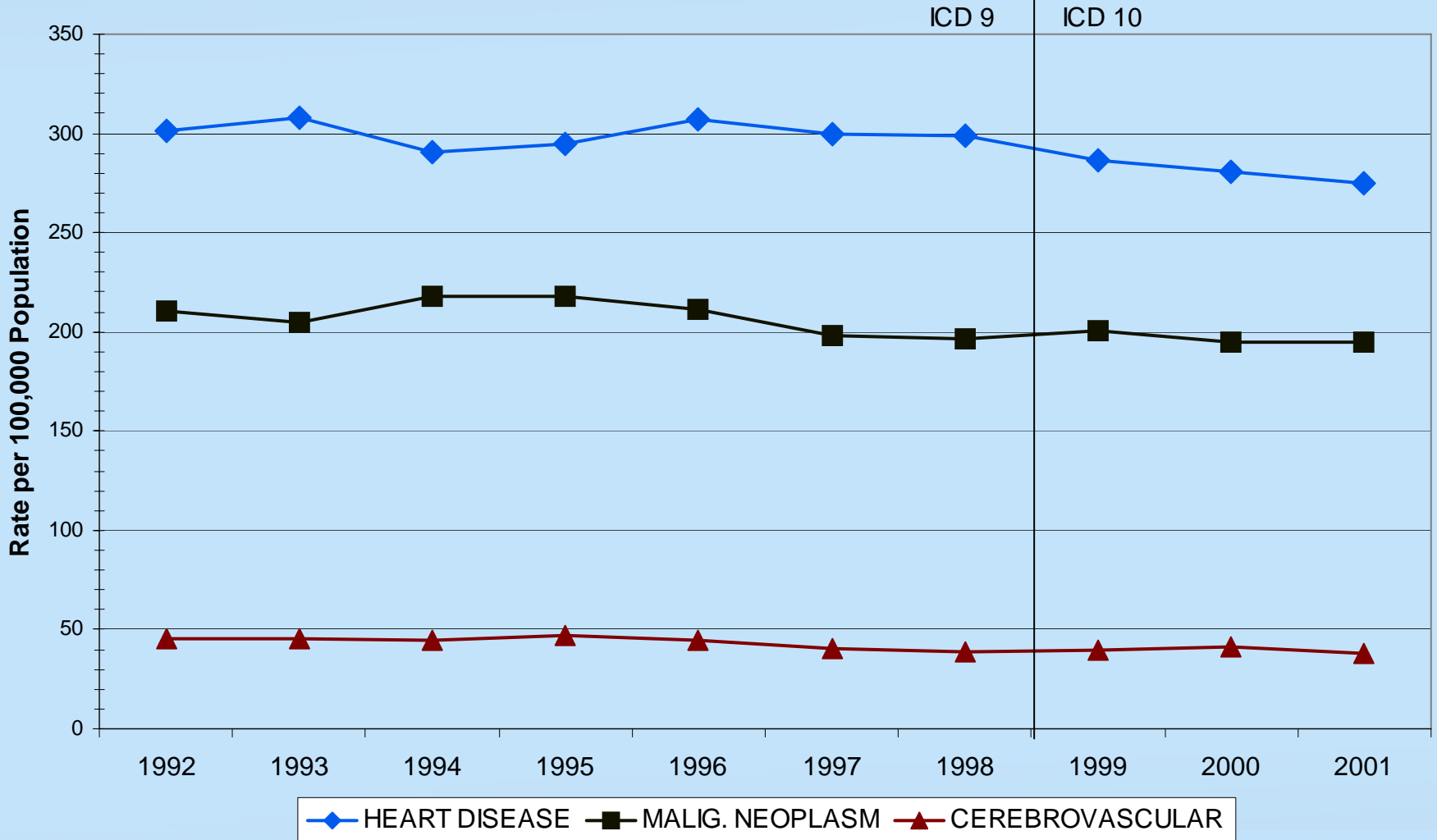
ANNUAL INFANT MORTALITY by RACE

5 YEAR MOVING AVERAGE: SUFFOLK NY



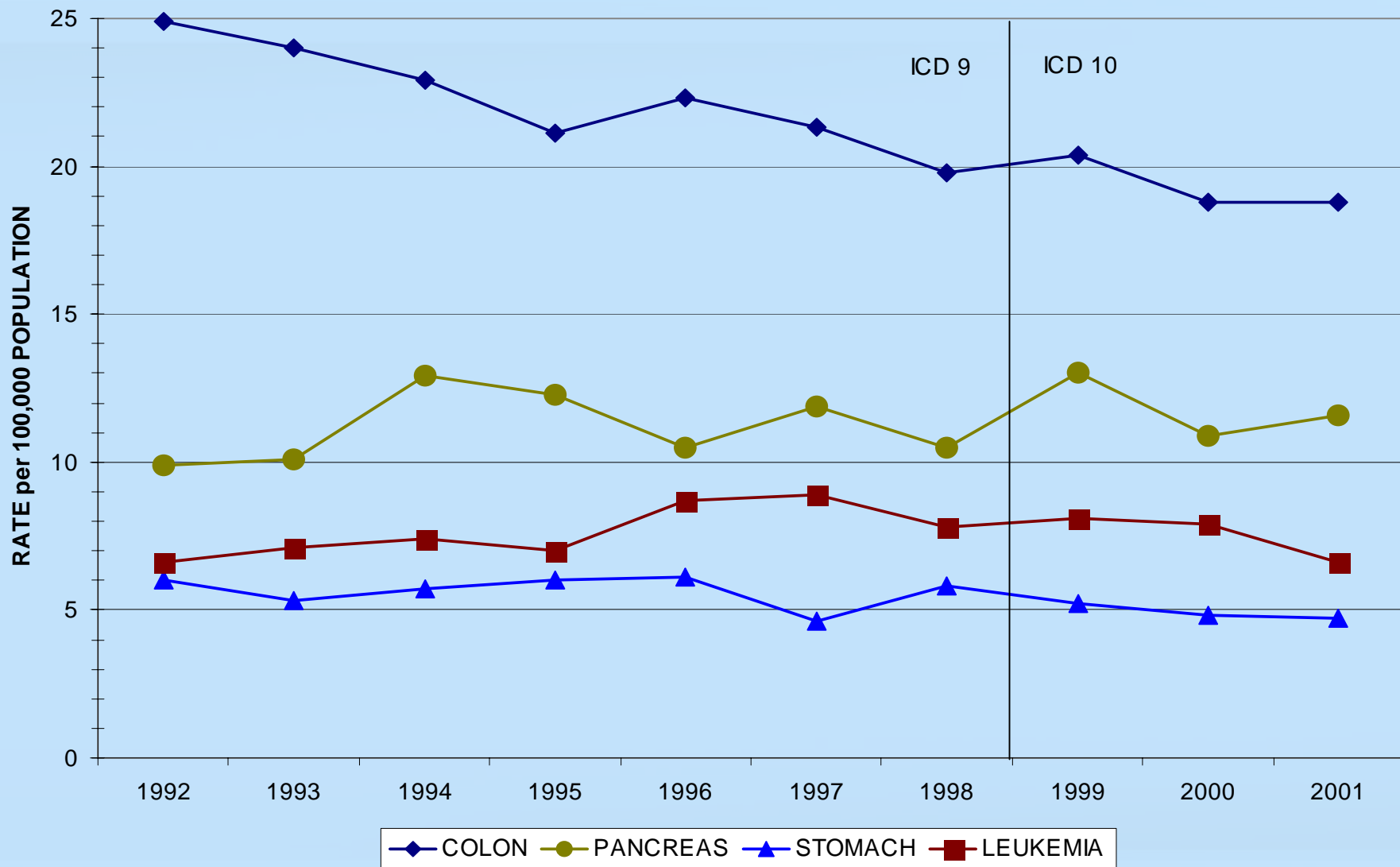
SELECTED CAUSES of MORTALITY

SUFFOLK NY 1992-2001



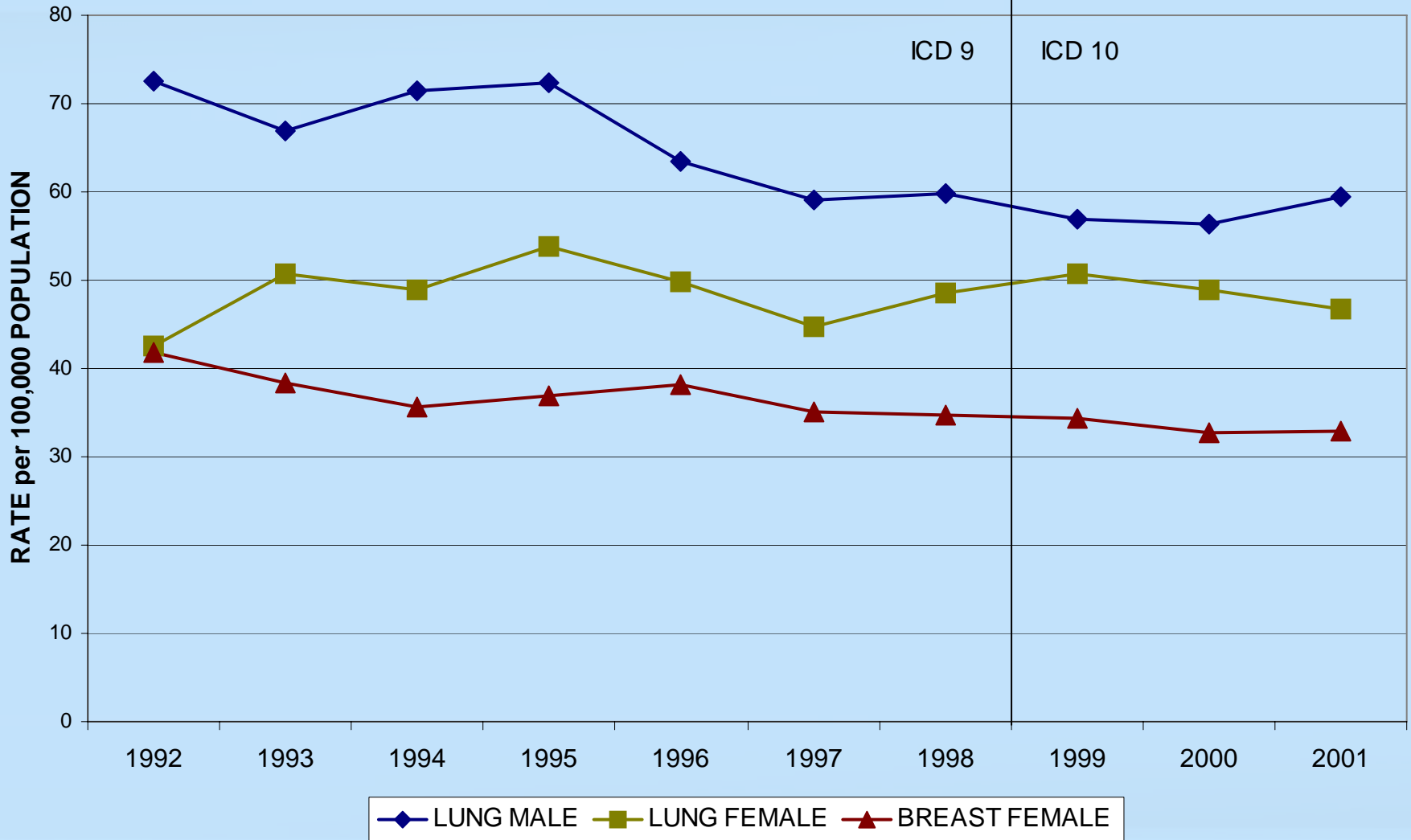
CANCER MORTALITY BY SITE

SUFFOLK NY 1992-2001



LUNG and BREAST CANCER MORTALITY

SUFFOLK NY 1992-2001



**AQUIRED IMMUNE DEFICIENCY SYNDROME (AIDS)
UNITED STATES AND SUFFOLK COUNTY RISK FACTOR
CUMULATIVE DATA THROUGH DECEMBER 31, 2002**

RISK FACTOR	UNITED STATES		SUFFOLK COUNTY	
	NUMBER	PERCENT	NUMBER	PERCENT
HOMOSEXUAL	384,784	45%	1,083	32%
INJECTING DRUG ABUSER	209,920	24%	1,281	38%
HOMOSEXUAL AND INJECT DRUGS	54,224	6%	210	6%
HEMOPHILIAC	5,607	1%	28	1%
HETEROSEXUAL	100,071	12%	379	11%
BLOOD TRANSFUSIONS	9,537	1%	53	2%
CHILD OF INFECTED PARENT	8,425	1%	64	2%
OTHER/ UNKNOWN	86,432	10%	316	9%
TOTAL	859,000	100%	3,414	100%

Data Compiled by
Edward Nadel Ph.D., M.P.H.
Biostatistician