

SUFFOLK COUNTY NY

Department of Health Services

2003 Annual Report

Vital Statistics for 2002

Steve Levy

County Executive

Brian L. Harper M.D., M.P.H

Commissioner

Note on Changes in the Vital Statistics Data

Starting with the 1999 vital statistics data, two important changes were made in the way statistical data are classified and analyzed. These changes are very important to keep in mind when comparing rates calculated from 1999 or later years with rates from pre-1999 data.

The first change is that, starting with 1999, deaths are classified using a new system *International Classification of Disease 10* (ICD 10) instead of the older ICD 9 system. For certain causes of death, like influenza and pneumonia, rates have been substantially reduced because deaths have been reclassified to other causes under ICD 10. For other causes of death, like cancer, total death rates have been little impacted but the internal distribution of deaths between different types of cancer have changed¹. A dashed vertical line has been used in the mortality trend graphs in the *SCDHS Annual Report* to caution in making trend comparisons between rates compiled in the two ways. (Rigorous statistical comparisons between ICD 9 and ICD 10 compiled rates requires the use of a formula with a comparability ratio for that cause of death. Some of these ratios have been published by the National Center for Health Statistics, see footnote one below.)

A second major change was also made beginning with the 1999 data. The age adjustment standard for mortality data was changed from the 1940 US population to the 2000 US population. Age standards are used so that rates can be compared between populations that have different age distributions. Older populations generally have more disease, so one wants to control for differences in age when making population comparisons.

Different data sets, mortality, cancer incidence, national health surveys, etc., had been using different standard populations (1940 US population, 1970 US population, etc.). Therefore it was decided in 1998 by the US Department of Health and Human Services to adopt a single age adjustment standard across all health data sets². This change in the age adjustment standard only affects a single *SCDHS Annual Report* table: 'Crude and Age-Adjusted Death Rates From Leading Causes by Township of Residence'. In this table the age-adjusted rates, given in parentheses, use the new standard. Caution should be exerted in comparing these age-adjusted rates with the corresponding age-adjusted rates in previous year editions of the *SCDHS Annual Report*. Rate differences could be due, entirely or in part, to differences in the age-adjustment standard or in changes in the disease classification system.

¹For a detailed discussion of the impact of this change see Anderson RN, Minino AM, Hoyert DL, and Rosenberg HM; 'Comparability of Cause of Death Between ICD-9 and ICD-10: Preliminary Estimates'; National Vital Statistics Reports; Vol. 49, No. 2, May 18, 2001

²Klein, RJ, Schoenborn CA; 'Age Adjustment Using the 2000 Projected US Population'; Healthy People 2010 Statistical Notes; No. 20, Jan. 2001

Note on Small Cell Frequencies

Because many diseases are rare, low frequencies may occur in some of the cells of the following statistical tables. Cell frequencies under twenty five should be treated cautiously. Random chance has a greater impact on cell counts, on a year to year basis, when the cell frequencies are small. Random chance can raise or lower counts in an artificial manner that has little to do with the underlying disease trend. Rates created from such frequencies will also jump up and down reflecting these random changes.

In approaching a small cell frequency, and its corresponding rate, it is best to look at several years of data to see if there are substantial changes on a year to year basis. If the rate is consistent across years, we have greater confidence that the observed rate reflects the underlying rate exclusive of random chance.

In order to facilitate inspection of year to year changes in a cell frequency, several years of the *SCDHS Annual Report* statistical tables are posted on this web page.

**VITAL STATISTICS RATES BY TOWNSHIP OF RESIDENCE:
2002 COMPARISON OF SUFFOLK COUNTY WITH OTHER AREAS**

Numbers	2002			
	Total N.Y.S.	New York City	Nassau County	Suffolk County
Live Births	250,806	117,939	16,336	19,852
Premature Births (1)	19,853	9,959	1,240	1,459
Out-of-Wedlock Births (2)	89,726	53,037	2,983	4,557
Total Pregnancies (3)	394,071	217,066	21,452	25,918
Teenage Pregnancies (4)	40,969	23,728	1,251	1,864
Births to Teenage Mothers	18,372	9,046	564	938
Total Deaths	156,656	58,356	11,307	11,517
Infant Deaths (<1 Year)	1,491	689	79	101
Neonatal Deaths (<28 days)	1,054	461	62	77
Induced Abortions	123,048	86,566	3,585	4,707
Spontaneous Fetal Deaths	20,217	12,561	1,531	1,359
Marriages	136,684	65,490	8,497	8,578
Dissolutions of Marriage	65,428	32,209	3,458	3,813

(1) Birth weights less than 2,500 grams

(2) Out-of-Wedlock Births include births where father's age was not stated on birth certificate plus births where paternity affidavit was filed.

(3) Pregnancies include Live Births, Induced Abortions and Spontaneous Fetal Deaths

(4) Females 19 years of age or younger

(5) Rate of 1,000 population

(6) Percentage of Total Live Births

(7) Percentage of Total Pregnancies

(8) Rate per 1,000 Live Births

(9) Rates per 1,000 Live Births plus induced Abortions or Spontaneous Fetal Deaths

**VITAL STATISTICS RATES BY TOWNSHIP OF RESIDENCE:
2002 COMPARISON OF SUFFOLK COUNTY WITH OTHER AREAS**

Rates	NYS	NYC	Nassau	Suffolk
Live Births (5)	13.1	14.6	12.1	13.7
Premature Births (6)	7.9	8.4	7.6	7.3
Out-of-Wedlock Births (6)	36.0	45.0	18.3	23.0
Teenage Pregnancies (7)	10.4	10.9	5.8	7.2
Births to Teenage Mothers (6)	7.3	7.7	3.4	4.7
Total Deaths (5)	8.2	7.2	8.4	7.9
Infant Deaths (<1 Year) (8)	5.9	5.8	4.8	5.1
Neonatal Deaths (<28 days) (8)	4.2	3.9	3.8	3.9
Induced Abortions (9)	329.1	423.3	180.0	191.7
Spontaneous Fetal Deaths (9)	74.6	96.2	85.7	64.1
Marriages (5)	7.1	8.1	6.3	5.9
Dissolutions of Marriage (5)	3.4	4.0	2.6	2.6

(1) Birth weights less than 2,500 grams

(2) Out-of-Wedlock Births include births where father's age was not stated on birth certificate plus births where paternity affidavit was filed.

(3) Pregnancies include Live Births, Induced Abortions and Spontaneous Fetal Deaths

(4) Females 19 years of age or younger

(5) Rate of 1,000 population

(6) Percentage of Total Live Births

(7) Percentage of Total Pregnancies

(8) Rate per 1,000 Live Births

(9) Rates per 1,000 Live Births plus induced Abortions or Spontaneous Fetal Deaths

**VITAL STATISTICS RATES* BY TOWNSHIP OF RESIDENCE:
SUFFOLK COUNTY, 2002**

	Babylon	Brkhaven	East Hampton	Huntington	Islip	Riverhead	Shelter Island	Smithtown	Stmptn	Southold	TOTAL (1) SUFFOLK
Live Births (2)	135	132	11.9	133	154	79	60	129	164	95	137
Premature Births (3)	89	72	49	64	7.7	9.5	0.0	66	68	50	73
Teenage Pregnancies (4)	80	69	66	42	81	94	5.5	61	88	7.5	72
Births to Teenage Mothers (5)	60	42	4.5	23	66	6.5	0.0	0.7	7.8	2.5	4.7
Total Deaths (2)	85	7.7	9.7	7.8	6.5	11.8	129	85	100	13.2	7.9
Infant Deaths (<1 Year) (6)	4.5	6.2	4.1	2.6	5.4	0.0	0.0	5.3	6.4	5.0	5.1
Neonatal Deaths (<28 Days) (6)	4.2	4.6	4.1	1.9	3.8	0.0	0.0	4.6	4.3	5.0	3.9
Induced Abortions (7)	176.2	209.3	190.0	109.6	169.9	308.4	222.2	264.8	122.5	176.2	191.7
Spontaneous Fetal Deaths (7)	67.0	89.7	16.2	42.5	46.8	72.3	0.0	47.0	32.2	38.3	64.1

*Cell size frequencies lower than twenty, and rates created from such frequencies, are prone to statistical instability. See **Cautionary Note** at front of tables section.

(1) Includes event with residence unknown

(2) Rates per 1,000 population

(3) Percent of all live births weighing less than 2,500 grams

(4) Percent of all pregnancies to mothers of age 19 or younger

(5) Percent of all live births to mothers of age 19 or younger

(6) Rates per 1,000 live births

(7) Rates per 1,000 live births plus induced abortions or spontaneous fetal deaths

**NUMBER* OF DEATHS FROM LEADING CAUSES BY TOWNSHIP OF RESIDENCE:
SUFFOLK COUNTY, 2002**

	Babylon	Brkhaven	East Hampton	Huntington	Islip	Riverhead	Shelter Island	Smithtown	Sthmptn	Southold	TOTAL (1) SUFFOLK
Population (2)	213,326	462,867	20,443	197,208	327,515	29,392	2,325	117,284	56,622	21,231	1,448,212
Live Births	2,880	6,132	243	2,633	5,031	231	14	1,519	931	201	19,852
Premature Births (3)	256	440	12	168	387	22	0	101	63	10	1,459
Total Pregnancies (4)	3,703	8,359	304	3,074	6,308	352	18	2,141	1,092	252	25,918
Teenage Pregnancies (5)	297	577	20	128	512	33	1	130	96	19	1,864
Births to Teenage Mothers	173	258	11	61	331	15	0	10	73	5	938
Total Deaths	1,822	3,552	199	1,532	2,145	348	30	998	565	280	11,517
Infant Deaths (<1 Year)	13	38	1	7	27	0	0	8	6	1	101
Neonatal Deaths (<28 Days)	12	28	1	5	19	0	0	7	4	1	77
Induced Abortions	616	1,623	57	324	1,030	103	4	547	130	43	4,707
Spontaneous Fetal Deaths	207	604	4	117	247	18	0	75	31	8	1,359

*Cell size frequencies lower than twenty, and rates created from such frequencies, are prone to statistical instability. See **Cautionary Note** at front of tables section.

(1) County Totals may be higher than the sum of townships because of events reported with unknown residence

(2) LIPA Population Estimates

(3) All live births with birth weight less than 2,500 grams

(4) Sum of all live births, induced abortions, and spontaneous fetal deaths

(5) All pregnancies to mothers of age 19 or younger

**NUMBER OF SELECTED NOTIFIABLE DISEASES BY TOWNSHIP OF RESIDENCE:
SUFFOLK COUNTY, 2002 AND PROVISIONAL 2003**

Disease	2002										Suffolk County Totals	
	Babylon	Brkhaven	East Hampton	Huntington	Islip	Riverhead	Shelter Island	Smithtown	Sthmptn	Southold	2002	2003 Prov.
Amebiasis	6	6	1	3	4	2	0	1	2	0	25	12
Babesiosis	0	14	16	0	5	10	0	0	11	10	66	42
Campylobacteriosis	19	67	4	22	35	6	1	17	9	6	186	185
E.Coli 0157:H7	0	8	0	5	3	0	0	2	3	1	22	3
Ehrlichiosis	1	2	0	0	0	2	0	0	0	0	6	12
Encephalitis	8	5	0	7	3	2	0	1	3	0	32	22
Giardiasis	12	28	2	27	50	2	0	15	4	2	152	129
Gonorrhea	169	131	1	17	113	36	1	8	21	1	501	470
Hemophilus Influenza	2	2	0	2	3	1	0	1	0	0	11	15
Hepatitis A	10	19	0	3	11	0	0	3	0	0	46	27
Hepatitis B	3	4	0	0	2	0	0	2	0	0	11	4
Hepatitis C	1	1	0	0	2	0	0	1	0	0	5	4
Legionellosis	0	5	0	2	2	1	0	0	2	0	12	32
Lyme Disease	9	169	49	20	51	49	24	21	70	42	513	288
Malaria	1	1	0	0	1	0	0	0	0	0	3	10
Measles	0	0	0	0	0	0	0	0	0	0	0	0
Meningitis	10	21	1	30	13	1	0	6	4	1	88	152
Mumps	0	1	0	1	0	0	0	0	0	1	3	0
Pertussis	3	1	0	0	2	1	0	0	0	0	8	63
R.M. Spotted Fever	0	0	0	0	0	0	0	0	0	0	0	0
Rubella	0	0	0	0	0	0	0	0	0	0	0	0
Salmonellosis	27	64	4	33	46	7	0	13	6	1	210	208
Shigellosis	6	8	1	4	15	0	0	1	3	0	40	78
Syphilis	8	16	0	5	20	3	0	0	0	0	66	90
Tuberculosis	9	13	1	11	13	3	0	6	0	1	57	61

**RATES(1) OF SELECTED NOTIFIABLE DISEASES BY TOWNSHIP OF RESIDENCE:
SUFFOLK COUNTY, 2002 AND PROVISIONAL 2003**

Disease	2002										Suffolk County Totals (1)	
	Babylon	Brkhaven	East Hampton	Huntington	Islip	Riverhead	Shelter Island	Smithtown	Sthmptn	Southold	2002	2003 Prov.
Amebiasis	2.8	1.3	4.9	1.5	1.2	6.8	0.0	0.8	3.5	0.0	1.7	0.8
Babesiosis	0.0	3.0	78.3	0.0	1.5	34.0	0.0	0.0	19.4	47.1	4.6	2.9
Campylobacteriosis	8.9	14.5	19.6	11.1	10.7	20.4	43.0	14.5	16.0	28.3	12.8	12.8
E.Coli 0157:H7	0.0	1.7	0.0	2.5	0.9	0.0	0.0	1.7	5.3	4.7	1.5	0.2
Ehrlichiosis	0.5	0.4	0.0	0.0	0.0	6.8	0.0	0.0	0.0	0.0	0.4	0.8
Encephalitis	3.8	1.1	0.0	3.5	0.9	6.8	0.0	0.8	5.3	0.0	2.2	1.5
Giardiasis	5.6	6.0	9.8	13.7	15.2	6.8	0.0	12.8	7.1	9.4	10.5	8.9
Gonorrhea	79.2	28.3	4.9	8.6	34.5	122.5	43.0	6.8	37.1	4.7	34.6	32.4
Hemophilus Influenza	0.9	0.4	0.0	1.0	0.9	3.4	0.0	0.8	0.0	0.0	0.8	1.0
Hepatitis A	4.7	4.1	0.0	1.5	3.3	0.0	0.0	2.6	0.0	0.0	3.2	1.9
Hepatitis B	1.4	0.9	0.0	0.0	0.6	0.0	0.0	1.7	0.0	0.0	0.8	0.3
Hepatitis C	0.5	0.2	0.0	0.0	0.6	0.0	0.0	0.8	0.0	0.0	0.3	0.3
Legionellosis	0.0	1.1	0.0	1.0	0.6	3.4	0.0	0.0	3.5	0.0	0.8	2.2
Lyme Disease	4.2	36.5	239.7	10.1	15.6	166.7	1032.2	17.9	123.6	197.8	35.3	19.9
Malaria	0.5	0.2	0.0	0.0	0.3	0.0	0.0	0.0	0.0	0.0	0.2	0.7
Measles	0.0	0.0	0.0	0.0	0.0	0.0	0.0	0.0	0.0	0.0	0.0	0.0
Meningitis	4.7	4.5	4.9	15.2	4.0	3.4	0.0	5.1	7.1	4.7	6.1	10.5
Mumps	0.0	0.1	0.0	0.5	0.0	0.0	0.0	0.0	0.0	4.7	0.2	0.0
Pertussis	1.4	0.1	0.0	0.0	0.6	3.4	0.0	0.0	0.0	0.0	0.5	4.4
R.M. Spotted Fever	0.0	0.0	0.0	0.0	0.0	0.0	0.0	0.0	0.0	0.0	0.0	0.0
Rubella	0.0	0.0	0.0	0.0	0.0	0.0	0.0	0.0	0.0	0.0	0.0	0.0
Salmonellosis	12.6	13.8	19.6	16.7	14.0	23.8	0.0	11.1	10.6	4.7	14.5	14.4
Shigellosis	2.8	1.7	4.9	2.0	4.6	0.0	0.0	0.8	5.3	0.0	2.8	5.4
Syphilis	3.8	3.5	0.0	2.5	6.1	10.2	0.0	0.0	0.0	0.0	4.6	6.2
Tuberculosis	4.2	2.8	4.9	5.6	4.0	10.2	0.0	5.1	0.0	4.7	3.9	4.2

(1) Cases per 100,000 population

NUMBER OF DEATHS FROM LEADING CAUSES BY TOWNSHIP OF RESIDENCE:

SUFFOLK COUNTY 2002

CAUSE OF DEATH WITH I.C.D. X CODE	Babylon	Brkhaven	East Hampton	Huntington	Islip	Riverhead	Shelter Island	Smithtown	Sthmptn	Southold	TOTAL (1) SUFFOLK
Heart Disease (I00-09, I11, I13, I20-I51)	631	1,283	57	541	785	113	11	395	182	110	4,129
Malignant Neoplasms (140-208)	501	891	59	368	519	89	9	231	143	61	2,880
Cerebrovascular Disease (430-438)	82	141	13	77	101	15	4	41	33	15	524
Motor Vehicle Accidents (810-825)	14	67	5	13	48	6	0	12	6	2	174
All other accidents (800-809,826-949)	53	99	6	19	55	6	0	14	12	6	271
Cirrhosis of Liver (571)	14	19	1	6	26	7	0	5	4	0	82
Chronic Obstructive Pulmonary Disease	82	144	3	64	109	21	2	35	24	13	499
Diabetes Mellitus (250)	44	73	7	28	42	9	0	10	9	5	229
Pneumonia and Influenza (480-487)	39	84	4	45	58	4	0	17	14	7	272
Atherosclerosis (440)	7	16	0	38	6	0	0	20	4	1	92
Suicide (950-959)	21	30	3	16	17	2	0	8	6	1	104
Homicide (960-978)	8	4	0	1	8	1	0	1	1	0	24
All Other Causes	326	701	40	316	371	75	4	209	127	59	2,237

*Cell size frequencies lower than twenty, and rates created from such frequencies, are prone to statistical instability. See **Cautionary Note** at front of tables section.

(1) County totals may be higher than the sum of townships because of events with Township of Residence unknown.

(2) Motor Vehicle Accidents and All Other Accidents use miscellaneous non-consecutive V codes in ICDX. A list of codes for each of these causes is available on request.

CRUDE AND ADJUSTED *DEATH RATES **FROM LEADING CAUSES BY TOWNSHIP OF RESIDENCE:SUFFOLK COUNTY 2002

I.C.D. X CODE	CAUSE OF DEATH	Babylon	Brkhaven	East Hampton	Huntington	Islip	Riverhead	Shelter Island	Smithtown	Sthmptn	Southold	TOTAL SUFFOLK
(I00-09, I11, I13, I20-I21)	Heart Disease	295.8	277.2	280.3	247.3	239.7	384.5	473.1	336.8	320.9	518.1	283.7
		(320.9)	(335.7)	(224.3)	(274.7)	(323.6)	(265.9)	(207.2)	(304.7)	(237.9)	(285.6)	(307.2)
(C00-C97)	Malignant Neoplasms	234.9	192.5	290.1	186.6	158.5	302.8	387.1	197.0	252.0	287.3	198.2
		(241.7)	(223.6)	(226.5)	(178.5)	(189.3)	(213.2)	(178.1)	(184.5)	(195.3)	(175.2)	(207.1)
(I60-I69)	Cerebrovascular Disease	38.4	30.5	61.9	39.0	30.8	51.0	172.0	35.0	58.9	70.7	36.0
		(41.7)	(37.1)	(49.7)	(39.6)	(41.3)	(33.8)	(66.5)	(33.9)	(43.4)	(36.1)	(39.2)
(See Note***)	Motor Vehicle Accidents	6.6	14.5	26.1	6.6	14.7	20.4	.0	10.2	10.0	9.4	11.9
		(6.9)	(15.5)	(27.0)	(7.8)	(15.3)	(19.8)	(.0)	(12.1)	(10.0)	(4.7)	(12.7)
(See Note***)	All other accidents	24.8	21.4	27.7	9.6	16.8	20.4	.0	11.9	21.8	28.3	18.6
		(25.8)	(23.2)	(22.4)	(9.7)	(18.5)	(16.8)	(.0)	(21.1)	(18.1)	(16.4)	(19.3)
(K70, K73, K74)	Cirrhosis of Liver	6.6	4.1	4.9	3.0	7.9	23.8	.0	4.3	7.1	.0	5.7
		(6.6)	(4.4)	(4.1)	(2.9)	(8.8)	(18.7)	(.0)	(4.5)	(5.7)	(.0)	(5.7)
(J40-J47)	Chronic Obstructive Pulmonary	38.4	31.1	14.7	32.5	33.3	71.4	86.0	29.8	42.4	61.2	34.3
		(40.9)	(37.8)	(11.5)	(32.4)	(44.6)	(48.7)	(38.5)	(29.7)	(31.7)	(32.3)	(37.2)
(E10-E14)	Diabetes Mellitus	20.6	15.8	34.2	14.2	12.8	30.6	.0	8.5	15.9	23.6	15.7
		(21.4)	(18.6)	(27.0)	(14.1)	(16.1)	(21.1)	(.0)	(7.9)	(12.6)	(13.4)	(16.5)
(J10-J18)	Pneumonia and Influenza	18.3	18.1	21.2	22.8	17.7	13.6	.0	14.5	24.1	33.0	18.8
		(20.1)	(22.0)	(16.9)	(23.2)	(23.8)	(8.9)	(.0)	(13.5)	(18.3)	(16.0)	(20.4)
(I70)	Atherosclerosis	3.3	3.5	.0	19.3	1.8	.0	.0	17.1	7.1	4.7	6.4
		(3.6)	(4.3)	(.0)	(19.9)	(2.4)	(.0)	(.0)	(15.2)	(5.2)	(2.8)	(7.0)
(X60-X84.9, Y87.0)	Suicide	9.8	6.5	14.7	8.1	5.2	6.8	.0	6.8	10.6	4.7	7.2
		(10.1)	(6.5)	(12.4)	(7.8)	(5.1)	(7.3)	(.0)	(6.5)	(10.6)	(4.3)	(7.1)
(X85-Y09.9, Y87.1, Y35, Y89.0)	Homicide	3.8	.9	.0	.5	2.4	3.4	.0	.9	1.8	.0	1.7
		(4.1)	(.9)	(.0)	(.5)	(2.6)	(5.0)	(.0)	(.7)	(2.1)	(.0)	(1.8)
	All Other Causes	152.8	151.4	197.2	160.2	113.3	255.2	172.0	178.2	223.7	277.9	153.8
		(161.6)	(176.7)	(159.2)	(158.9)	(139.3)	(188.8)	(88.3)	(164.3)	(177.1)	(172.9)	(163.1)

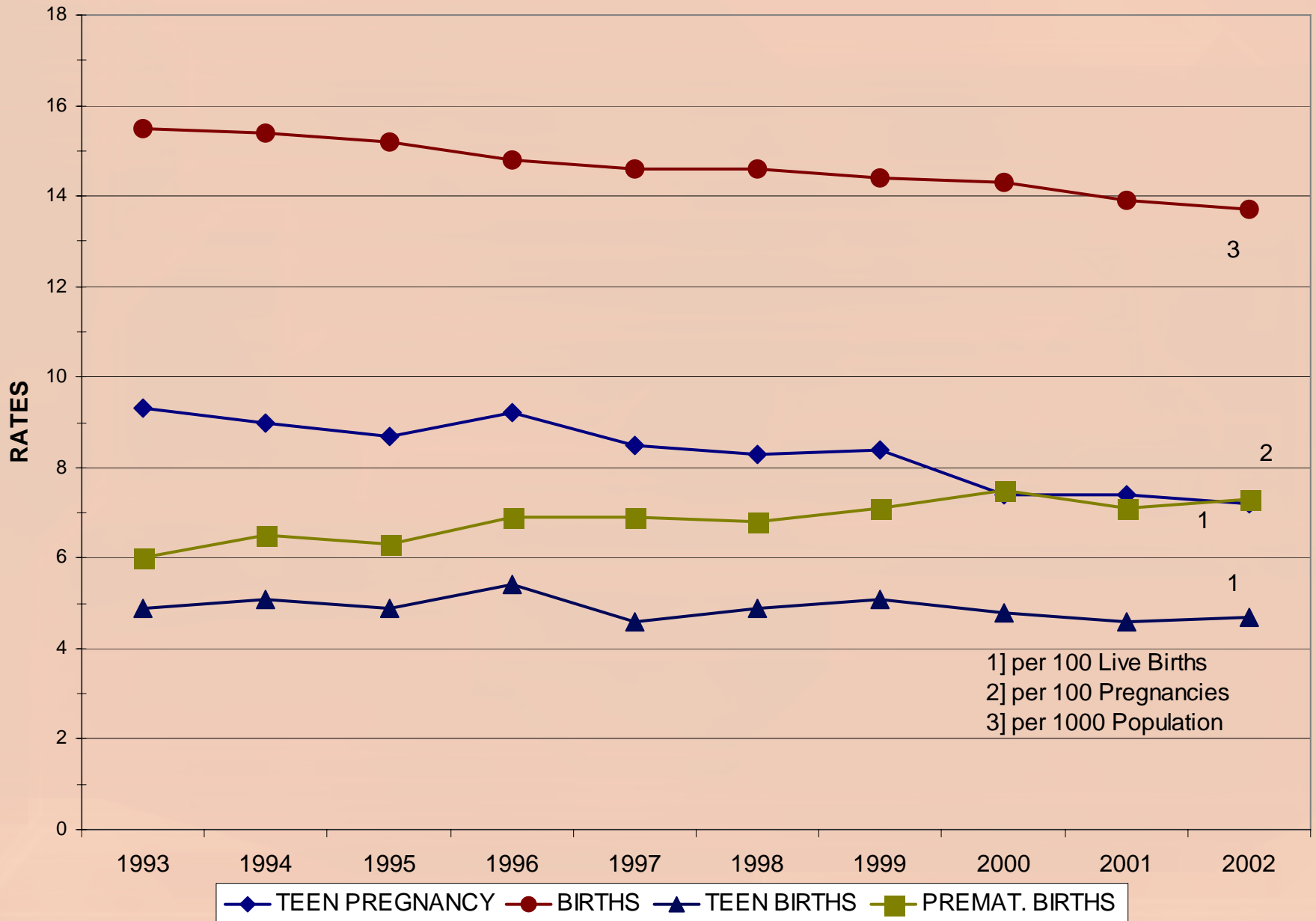
*Adjusted to 2000 U.S. Population. Age Adjusted rates are given in parentheses.

Cell size frequencies lower than twenty, and rates created from such frequencies, are prone to statistical instability. See **Cautionary Note at front of tables section.
Rates per 100,000 population.

*** Motor Vehicle Accidents and All Other Accidents use miscellaneous non-consecutive V codes in ICD X. A list of codes for each of these causes is available on request.

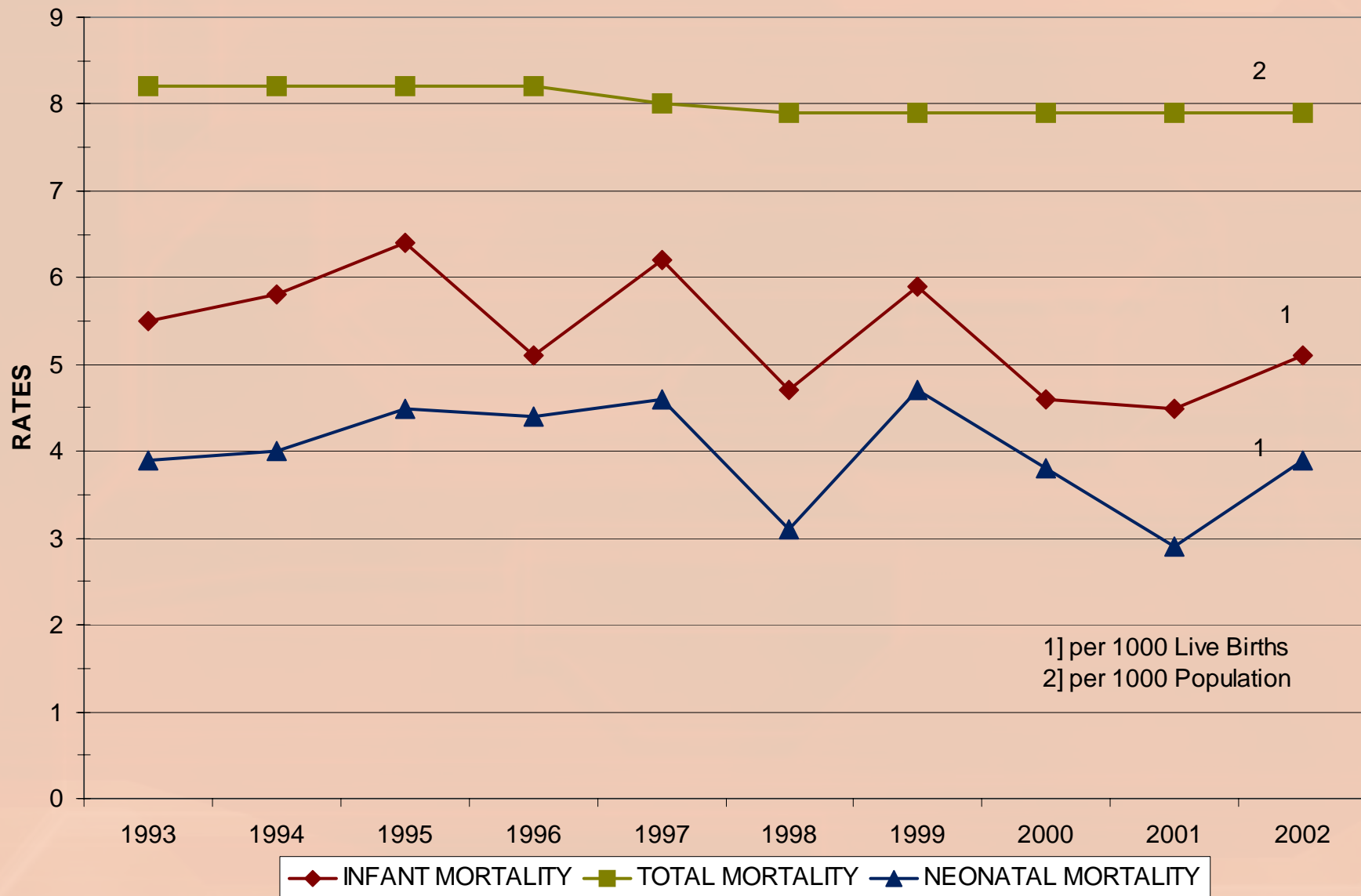
NATALITY RATES: SUFFOLK COUNTY

1993-2002: A TEN YEAR REVIEW



MORTALITY RATES: SUFFOLK NY

1993-2002: A TEN YEAR REVIEW



**INFANT DEATHS BY RACE
FREQUENCIES AND RATES*
SUFFOLK COUNTY 1993-2002**

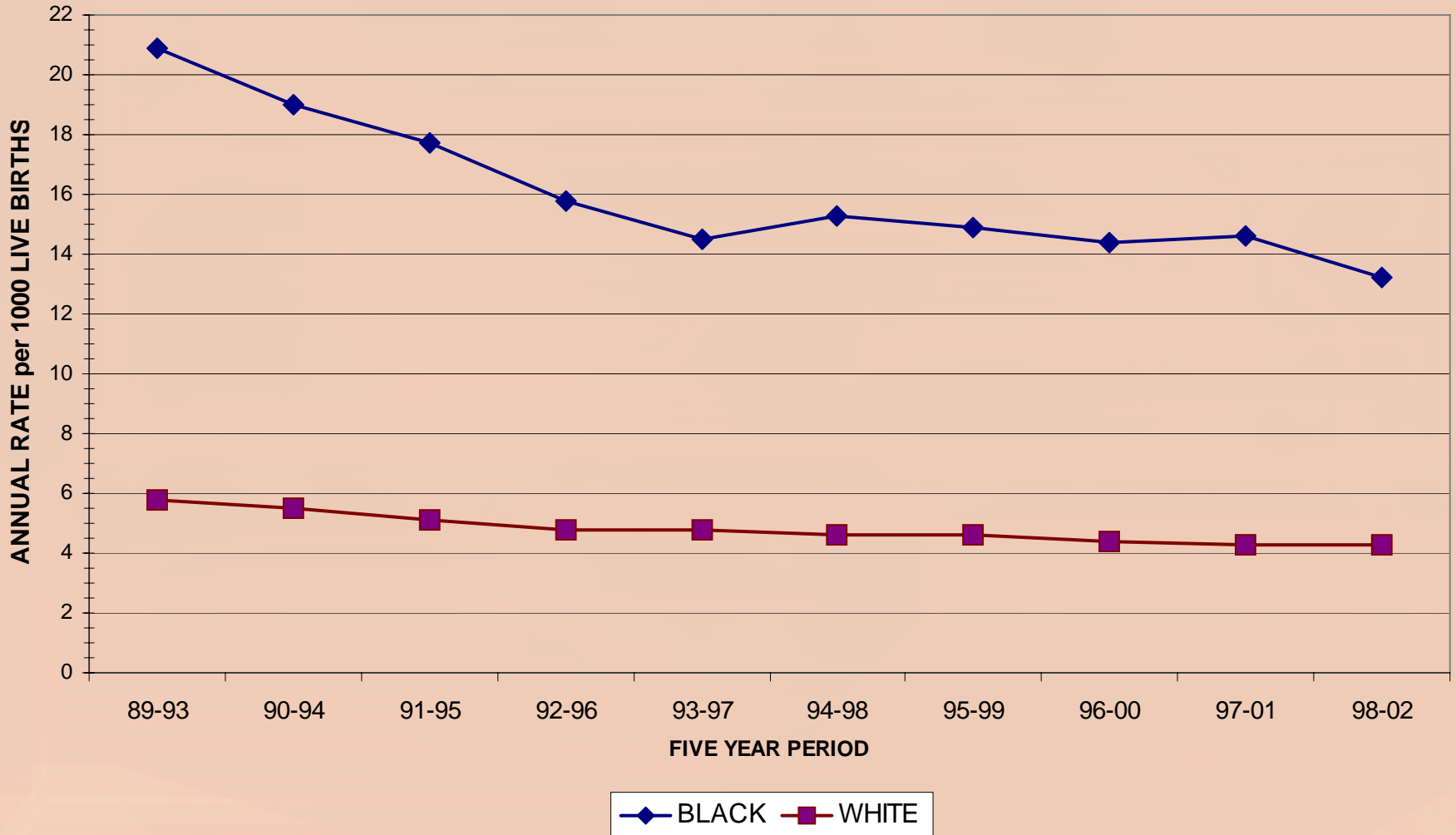
YEAR OF DEATH										
RACE	1993	1994	1995	1996	1997	1998	1999	2000	2001	2002
WHITE	88	89	84	75	93	66	91	64	65	88
	(4.9)	(4.9)	(4.7)	(4.3)	(5.3)	(3.8)	(5.2)	(3.6)	(3.7)	(5.1)
BLACK	22	27	32	21	23	28	23	29	24	11
	(12.1)	(15.3)	(19.1)	(12.5)	(13.7)	(15.7)	(13.6)	(16.3)	(13.9)	(6.3)

* Rates per 1,000 Live Births are given in parentheses

Cell size frequencies lower than twenty, and rates created from such frequencies, are prone to statistical instability. See **Cautionary Note at front of tables section.

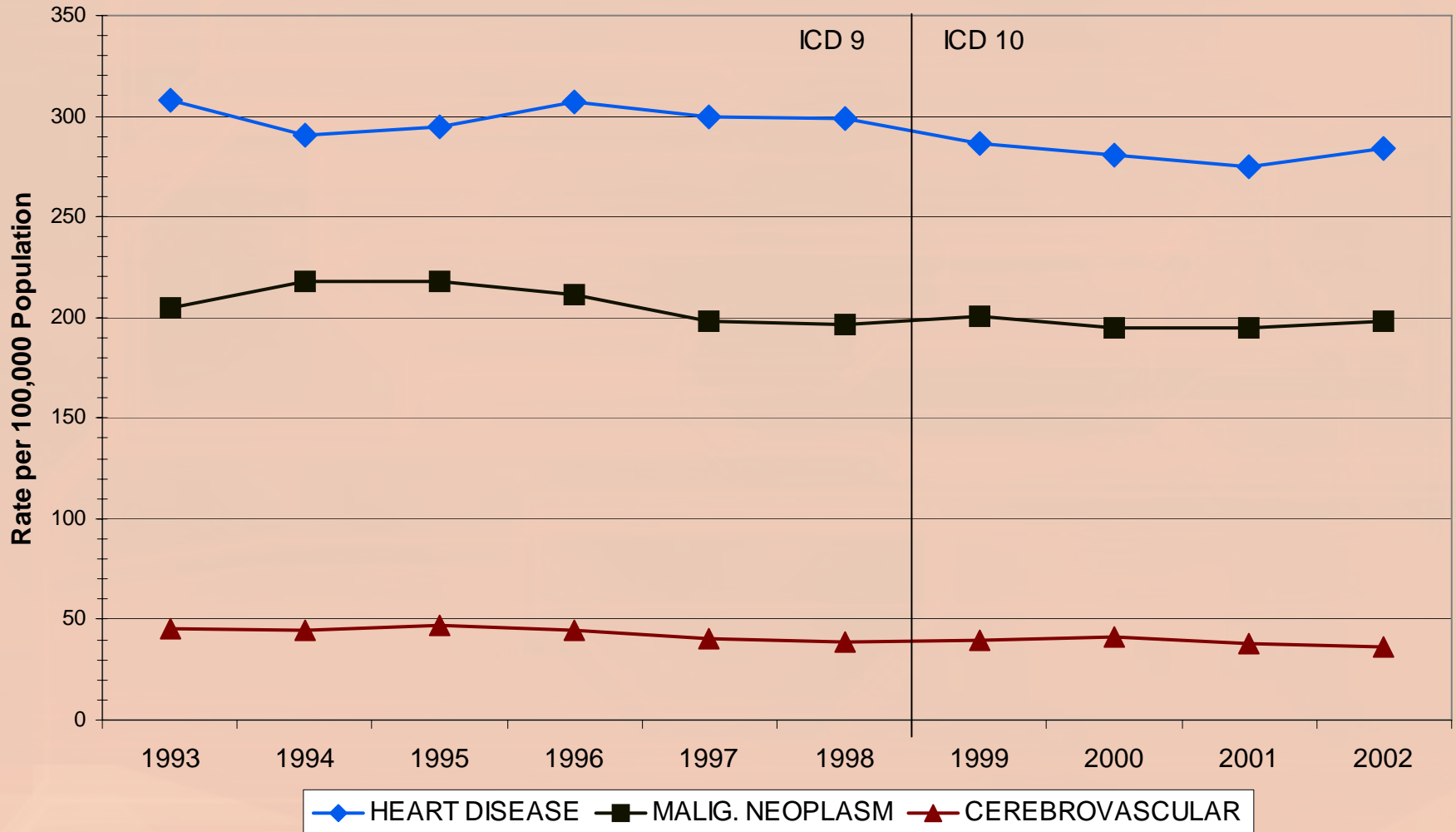
ANNUAL INFANT MORTALITY by RACE

5 YEAR MOVING AVERAGE: SUFFOLK NY



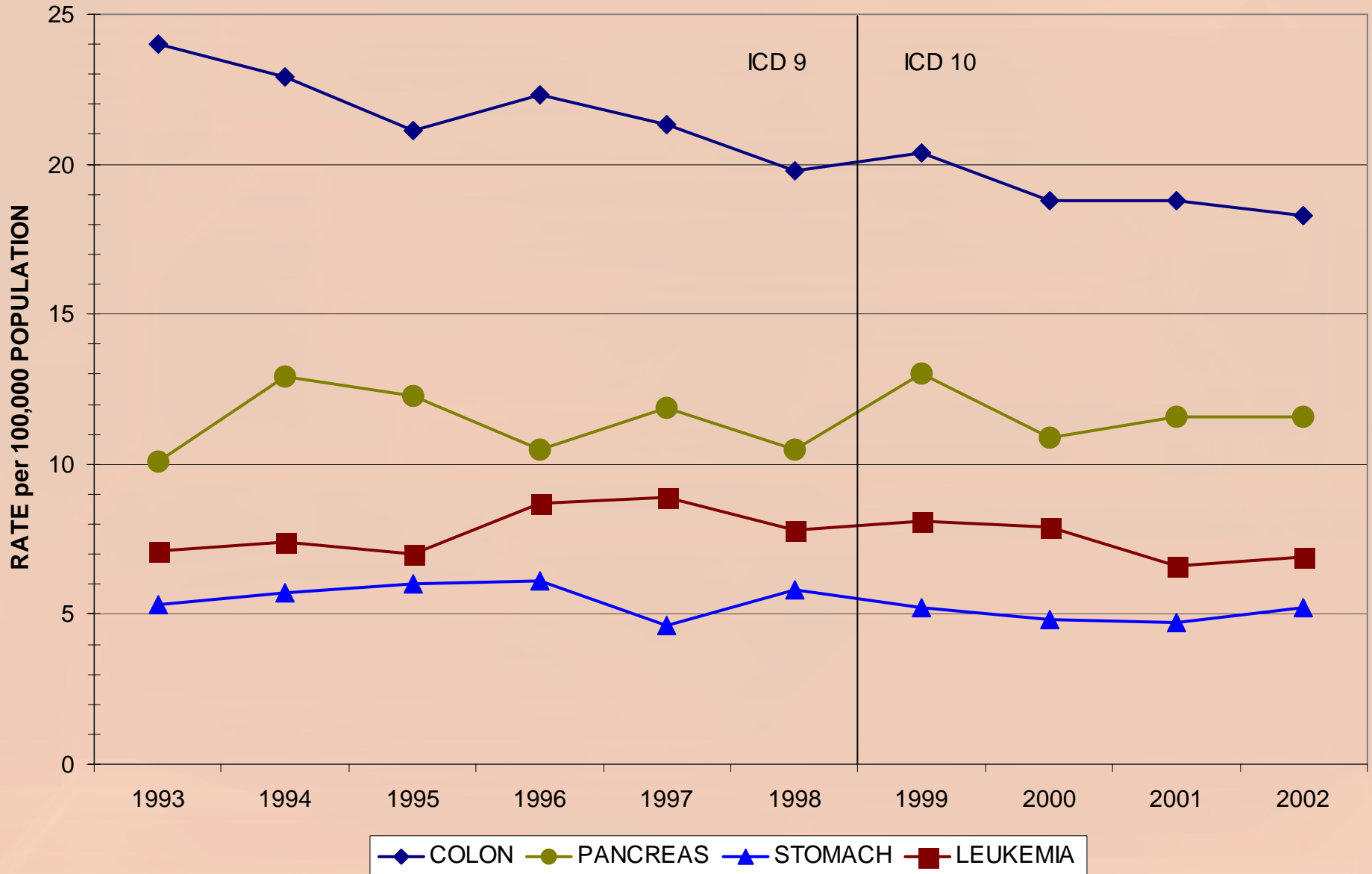
SELECTED CAUSES of MORTALITY

SUFFOLK NY 1993-2002



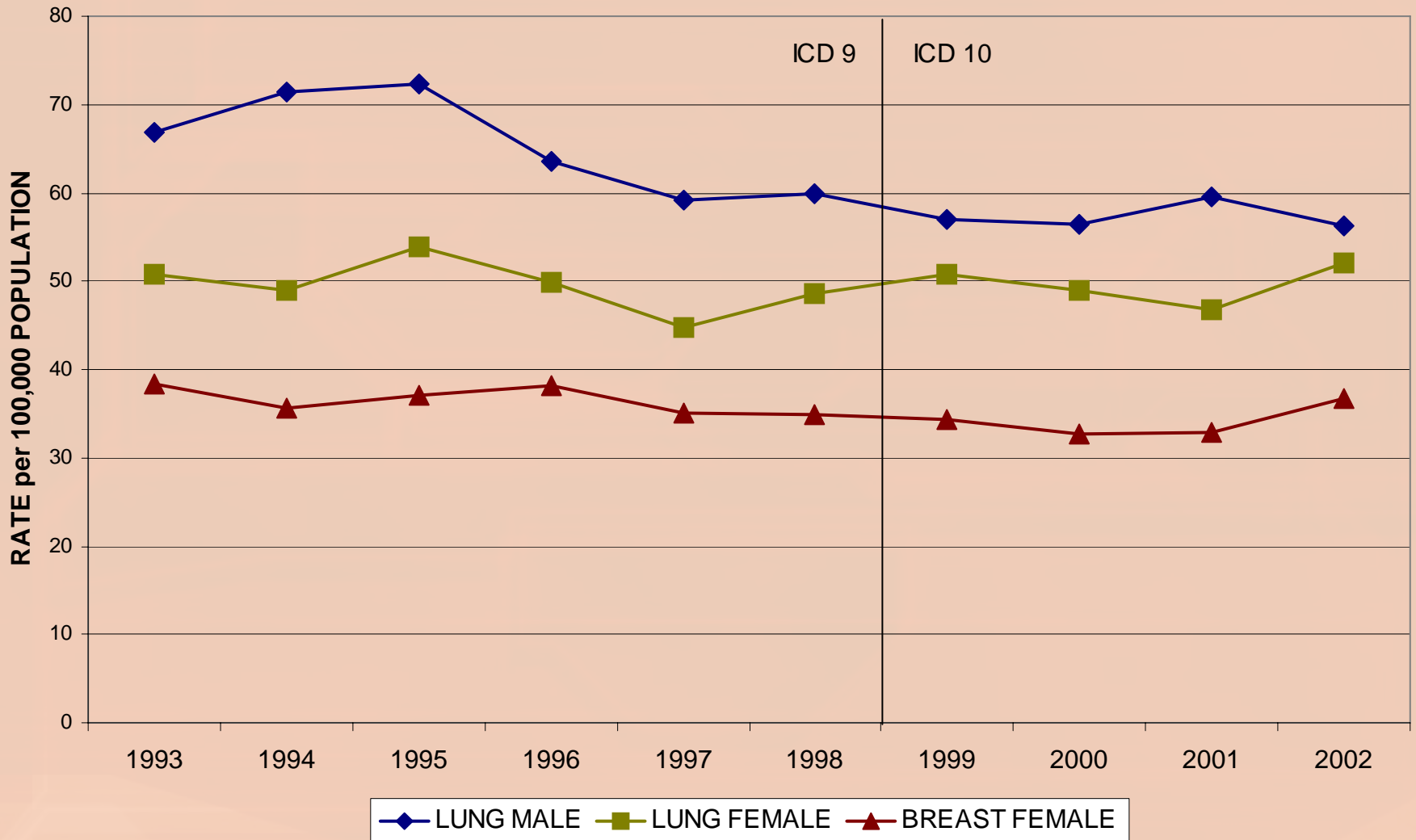
CANCER MORTALITY BY SITE

SUFFOLK NY 1993-2002



LUNG and BREAST CANCER MORTALITY

SUFFOLK NY 1993-2002



**AQUIRED IMMUNE DEFICIENCY SYNDROME (AIDS)
 UNITED STATES AND SUFFOLK COUNTY RISK FACTOR
 CUMULATIVE DATA THROUGH DECEMBER 31, 2003**

RISK FACTOR	UNITED STATES		SUFFOLK COUNTY	
	NUMBER	PERCENT	NUMBER	PERCENT
HOMOSEXUAL	401,392	44%	1,136	32%
INJECTING DRUG ABUSER	218,196	24%	1,306	37%
HOMOSEXUAL AND INJECT DRUGS	57,998	6%	212	6%
HEMOPHILIAC	5,682	1%	29	1%
HETEROSEXUAL	111,147	12%	401	11%
BLOOD TRANSFUSIONS	9,682	1%	53	1%
CHILD OF INFECTED PARENT	8,549	1%	65	2%
OTHER/ UNKNOWN	89,577	10%	347	10%
TOTAL	902,223	100%	3,549	100%



Data Compiled by

Edward Nadel Ph.D., M.P.H.

Biostatistician